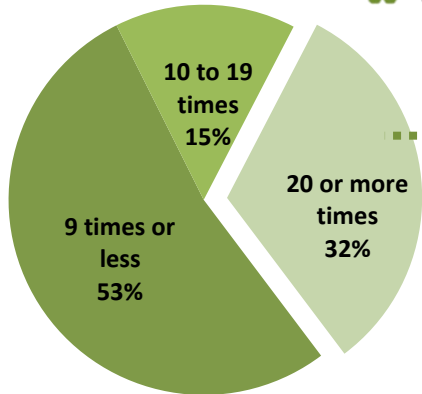


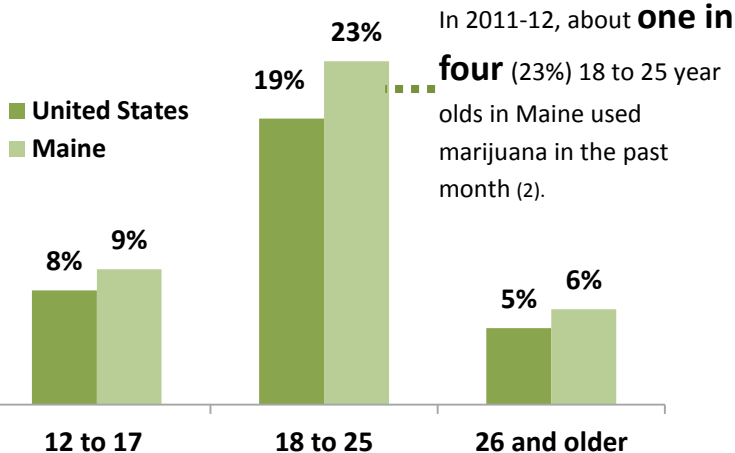
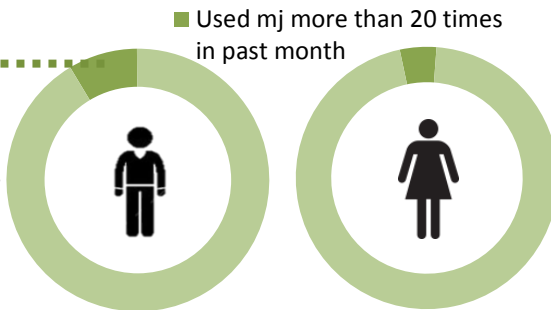
Substance Use

In 2013, **one in five** high school (HS) students reported using marijuana within the past month (rates have not changed since 2009) (1).



Of those HS students who used in the past month, about **one in three** used **20 times or more**(1).

Male HS students were about **2X** as likely to have used marijuana 20 times or more in the past month as females (8.5% vs. 4.5%) (1).

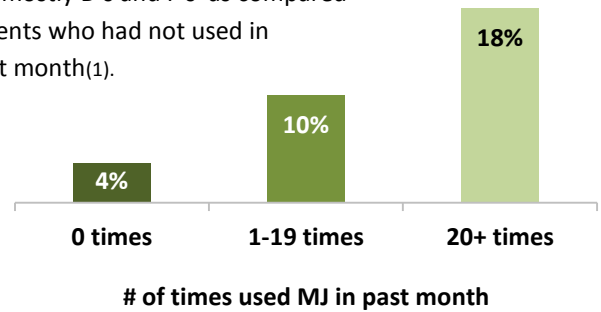


Sources

1. Maine Integrated Youth Health Survey (2013)
2. National Survey on Drug Use and Health (2011-12)

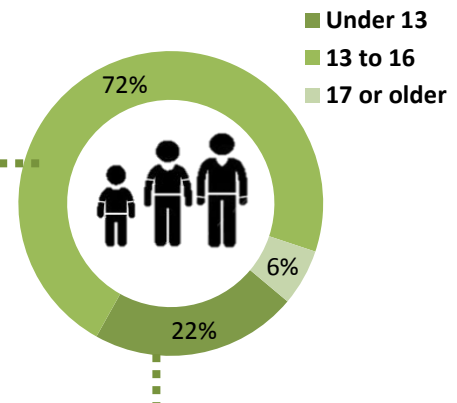
Academic Performance

Students who used marijuana **20 times** or more in the past month were more than **4X** as likely to report getting mostly D's and F's as compared to students who had not used in the past month(1).



Youth Initiation

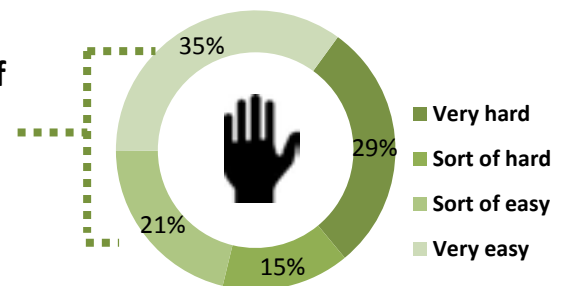
In 2013, **72%** of high school students who had ever used marijuana first did so between the ages **13 and 16**(1).



Of those high school students who ever tried Marijuana, **One in five** did so for the first time **before the age of 13** (1).

Youth Access

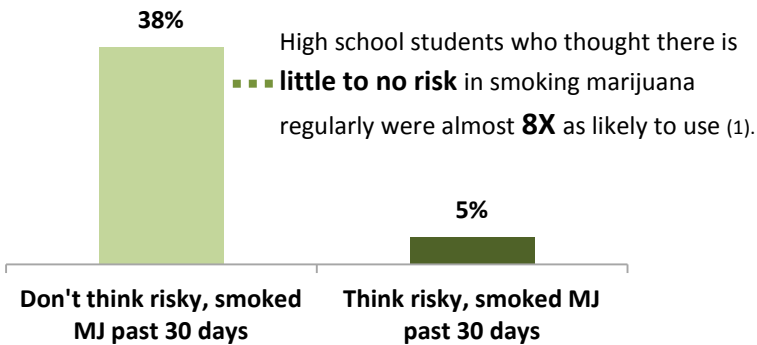
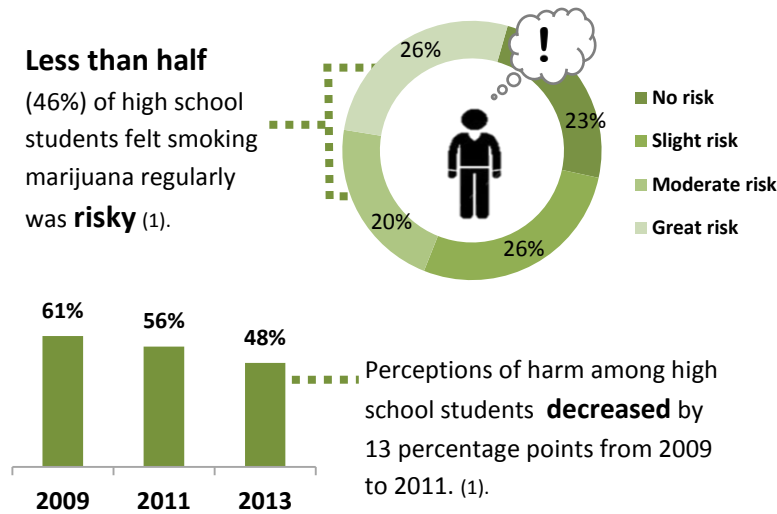
In 2013, **over half** (**56%**) of high school students felt marijuana would be **easy to get** (1).



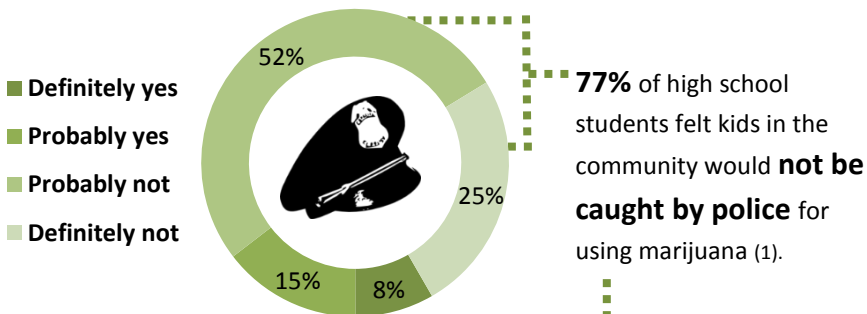
High school students who thought marijuana was **easy** to obtain were **5X** as likely to use it (1).

Perception of Harm

Less than half (46%) of high school students felt smoking marijuana regularly was **risky** (1).



Perception of Enforcement



High school students who thought that they would **not be caught by the police** were more than **3X** as likely to smoke marijuana (1).

Sources

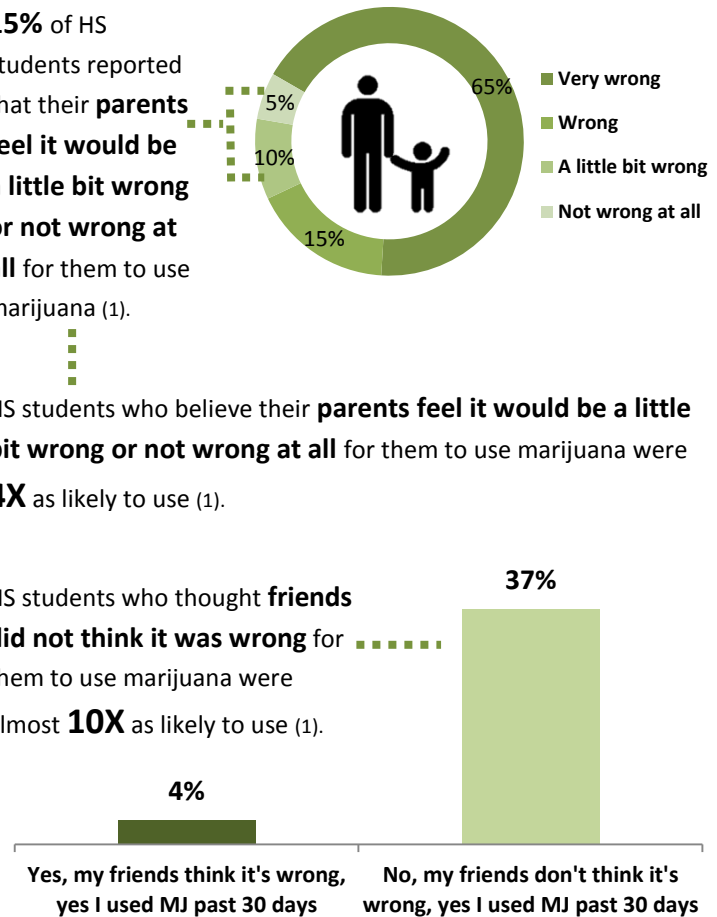
1. Maine Integrated Youth Health Survey (2013)
2. National Survey on Drug Use and Health (2011-12)
3. Treatment Data Set (2013)

Community and Social Norms

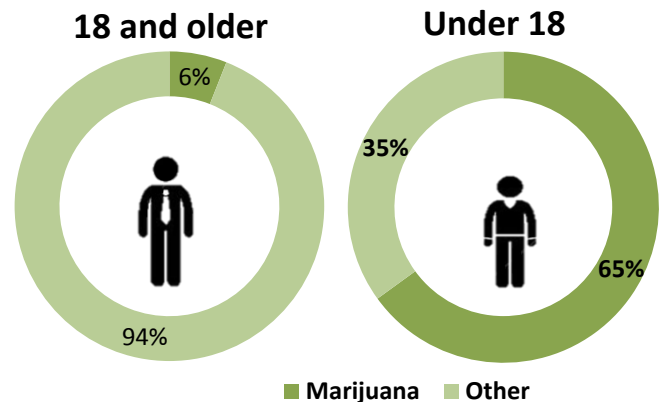
15% of HS students reported that their **parents** feel it would be a little bit wrong or not wrong at all for them to use marijuana (1).

HS students who believe their **parents** feel it would be a little bit wrong or not wrong at all for them to use marijuana were **4X** as likely to use (1).

HS students who thought **friends** did not think it was wrong for them to use marijuana were almost **10X** as likely to use (1).



Treatment



Marijuana accounted for **67%** of primary treatment admissions among people **under 18** and **6%** among adults **18 and over** (3).